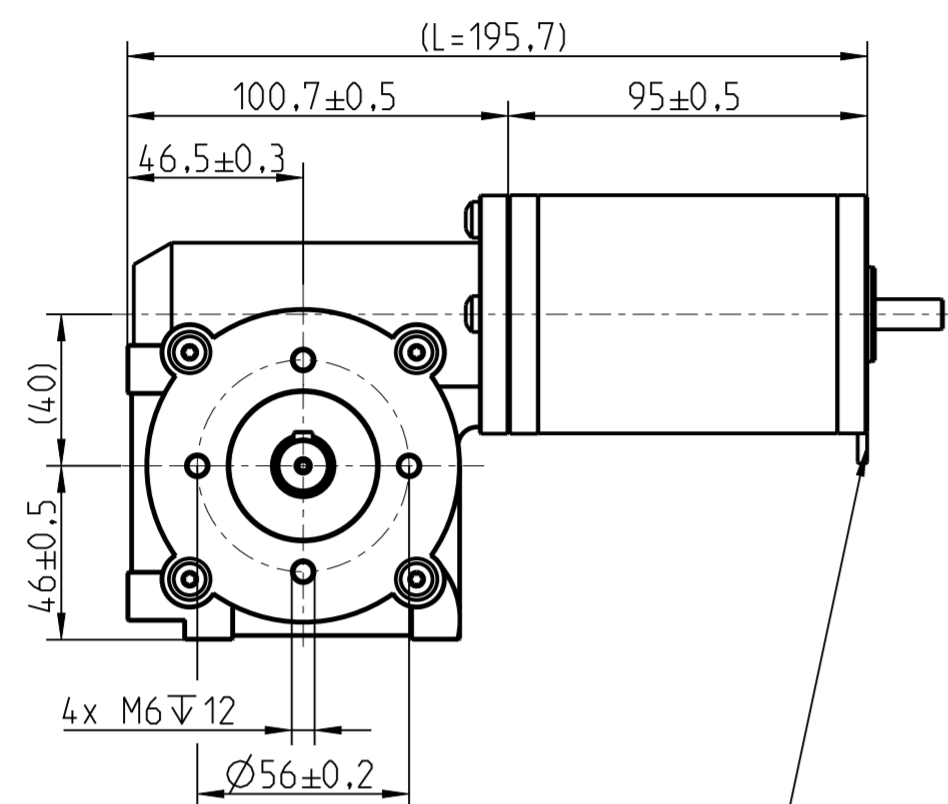
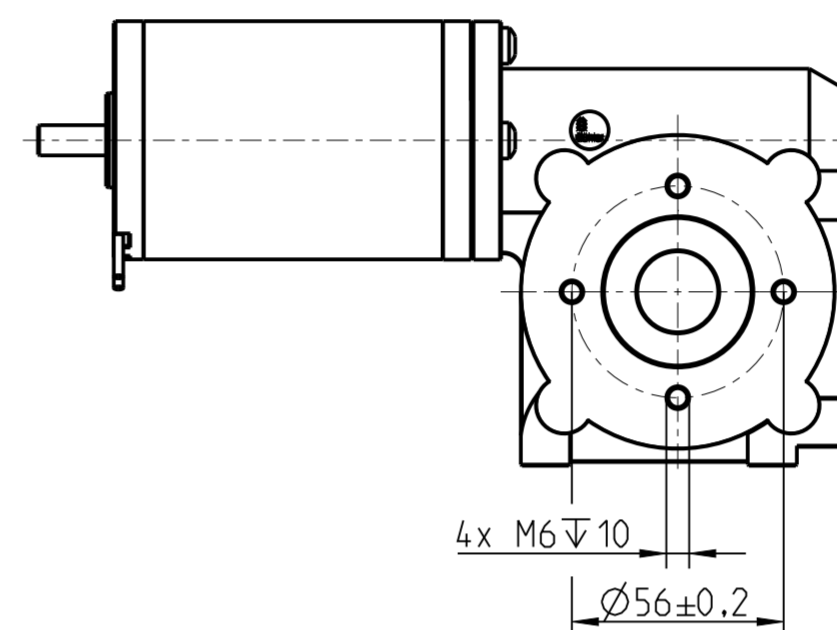
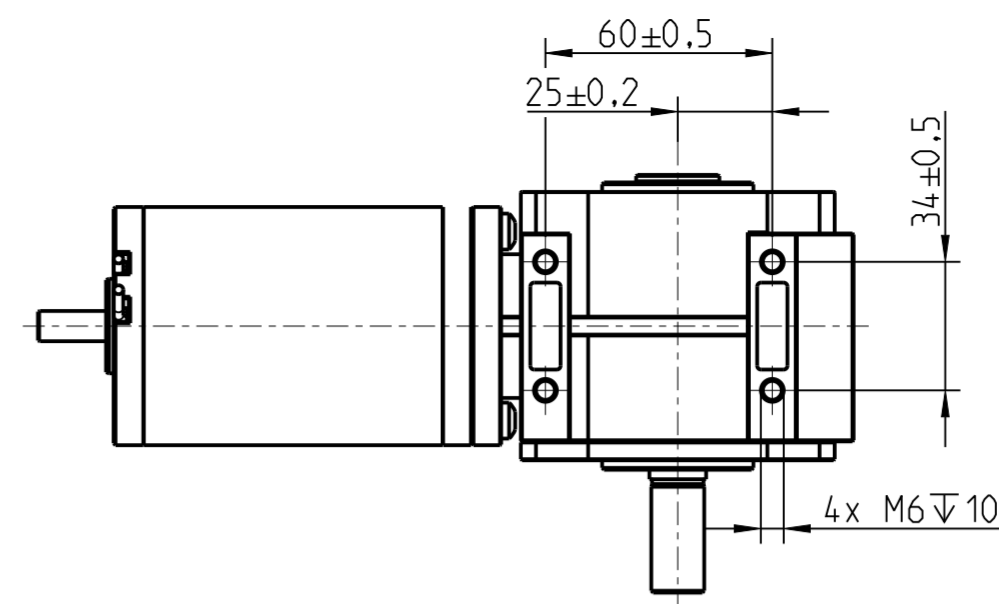
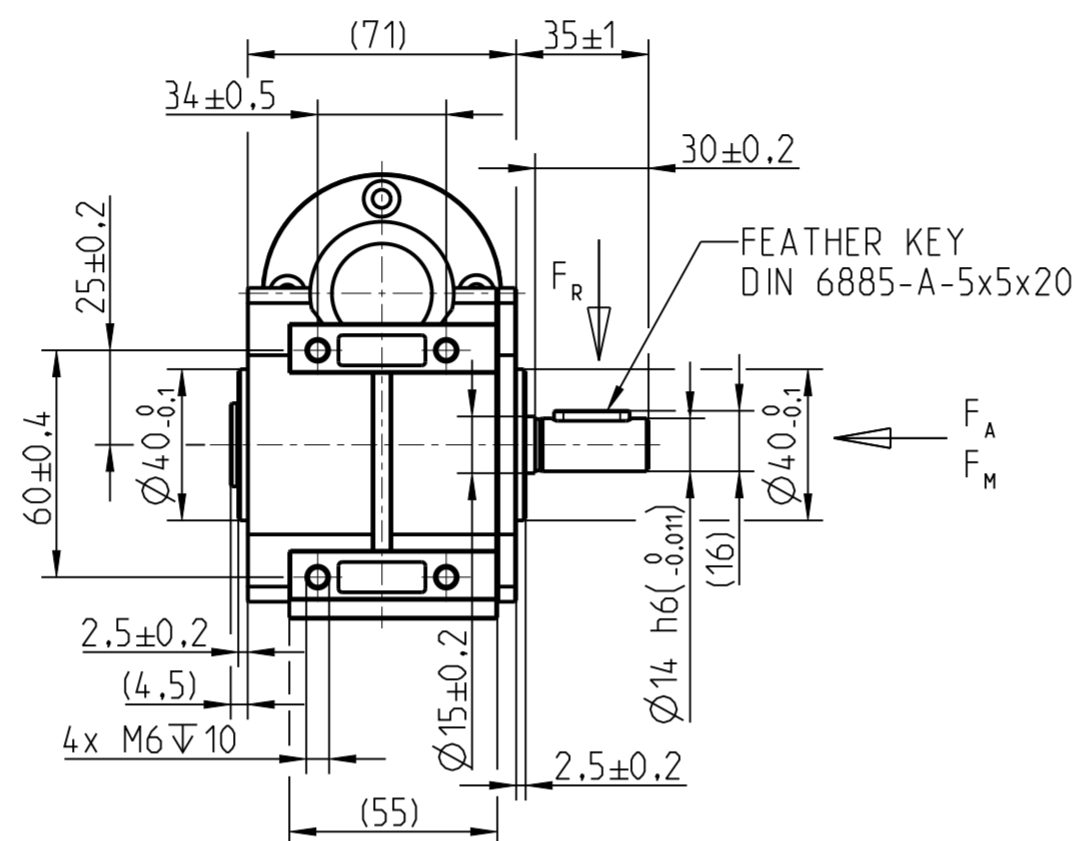


1	2	3	4	5	6	
MATERIAL (STYLE)	RATIO i (CATALOG)		F _R	F _A	F _M	T _{MAX}
PLASTIC (HELIX)	10:1 / 15:1		300 N	100 N	100 N (UNSUPPORTED)	1200 Ncm

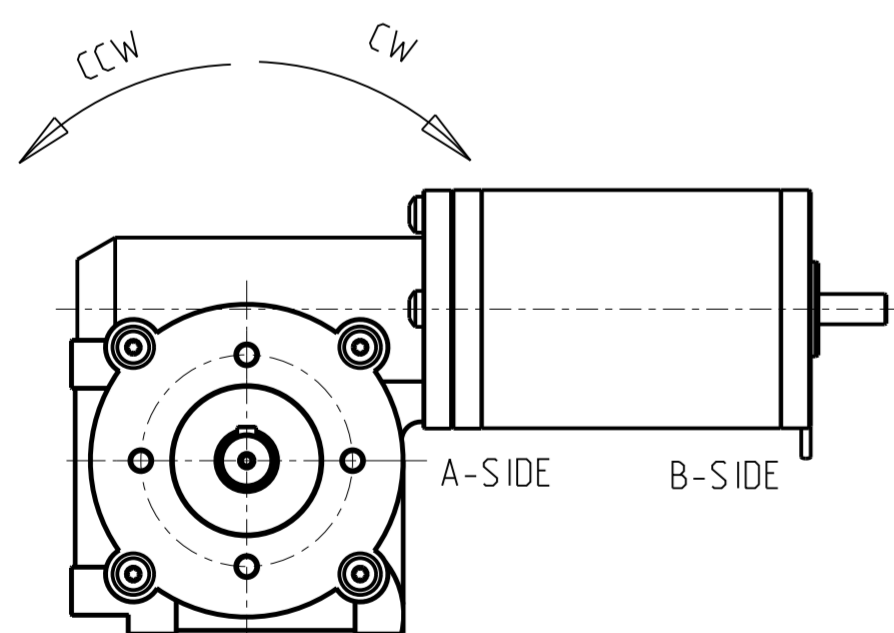
F_R - ALLOWED RADIAL FORCE MIDDLE OUTPUT SHAFT FROM MOUNTING SURFACE
 F_A - ALLOWED AXIAL FORCE
 F_M - ALLOWED MOUNTING FORCE FOR ADD-ON PARTS
 T_{MAX} - ALLOWED TORQUE



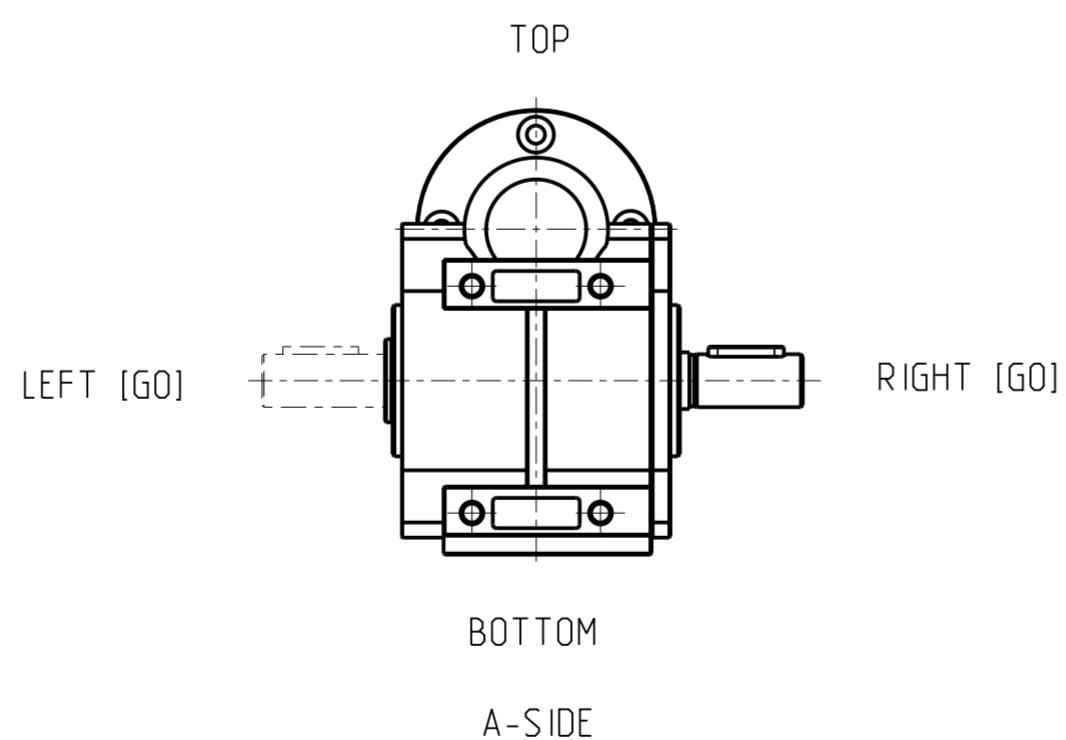
CABLE EXIT [GM]
 BOTTOM / TOP / LEFT / RIGHT



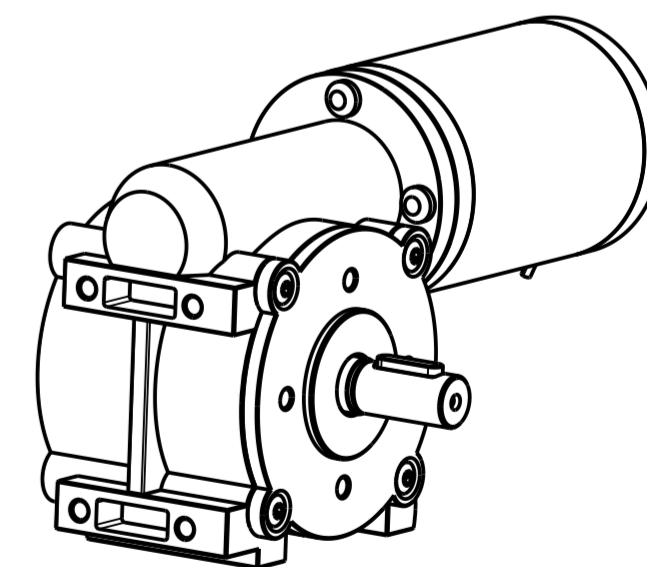
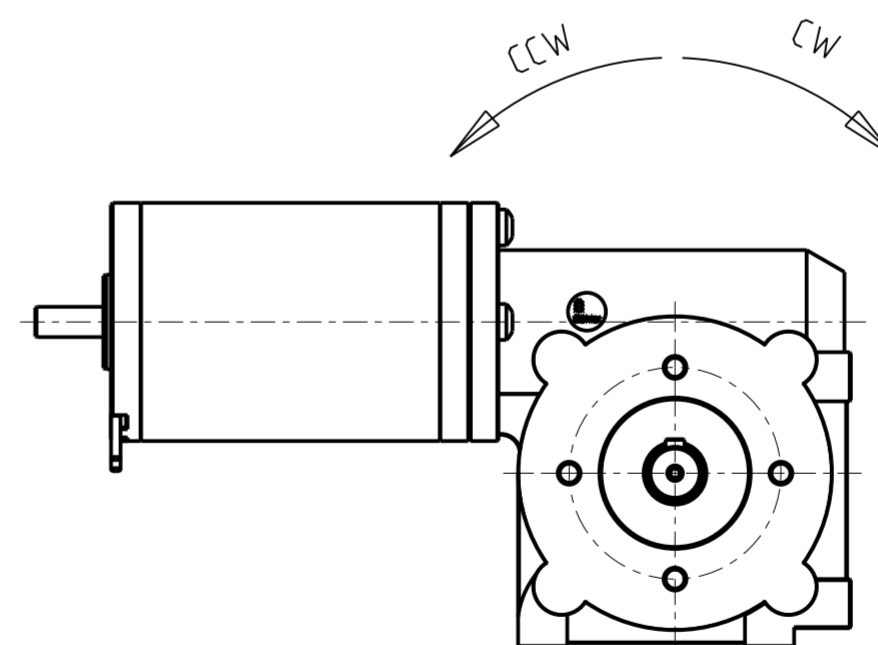
DIRECTION OF GEARBOX SHAFT ROTATION FOR RIGHT SHAFT [GO]



GEARBOX SHAFT ORIENTATION [GO]



DIRECTION OF GEARBOX SHAFT ROTATION FOR LEFT SHAFT [GO]



GENERAL TOLERANCES		MATERIAL		WT-PART NUMBER	
-		WORMGEAR WG40		13000596	
TOLERANCING		CHANGE DESCRIPTION		CREATED	
ISO 8015		0x ② EDITORIAL CHANGES		M.Semmlinger	
THEORETICAL MASS		CHANGE NUMBER		APPROVED	
(231.32 g)		-		Bretschneider	
SCALE		PREVIOUS VERSION		DOCUMENT STATE	
1:2		-		Design Released	
SIZE		TITLE		DOCUMENT REVISION	
DIN A2		bMotion		13001984 2	
Bühler Motor		PMDC 63x95		DATE OF ISSUE SHEET	
DIMENSIONS IN mm		ENGLISH WORDING IS BINDING		2024-05-21 5/10	
				ASSEM. DRAWING	

THE REPRODUCTION, DISTRIBUTION AND UTILIZATION OF THIS DOCUMENT AS WELL AS THE
 CONSTRUCTION OF A MACHINE OR OTHER DEVICE WITHOUT THE EXPRESS OR IMPLICIT
 PERMISSION OF BÜHLER MOTORS AG IS PROHIBITED. OFFENDERS WILL BE HELD LIABLE FOR THE PAYMENT OF DAMAGES. ALL
 RIGHTS RESERVED IN THE EVENT OF THE GRANT OF A PATENT. UTILITY MODEL OR DESIGN.

FIRST ANGLE PROJECTION
 Projektionsmethode 1

Wiedergabe sowie Vervielfältigung dieses Dokuments, Verwertung und
 Verbreitung, auch auszugsweise, ist ohne schriftliche Genehmigung der
 Bühler Motoren AG. Die Bühler Motoren AG übernimmt keine
 Gewährungen für Schäden, die aus dem Gebrauch dieser
 Zeichnungen resultieren. Alle Rechte für den Fall
 der Patent-, Gebrauchsmuster- oder Geschmacksmusterrechte vorbehalten.